

BORDEAUX • MARSEILLE • PARIS • TOULON • ABUJAN • DAKAR
SHANGHAI • SUZHOU • AVIGNON • BASTIA • BAYONNE

LET'S
BE
THE
CHANGE

History of KEDGE

KEDGE was created in 2013 from the merger of the Marseille and Bordeaux business schools, founded in 1872 and 1874 respectively. The school benefits from over 150 years of joint experience, certifying its expertise, excellence and prominent academic recognition.



School Rankings

FT RANKING 2022

39th
best European Business School

⋮

7th
best French Business School

CHALLENGES 2023

8th
best Master in Management

⋮

4th
International BBA,
best 4-year undergraduate programme

QS WORLD UNIVERSITY RANKING 2023

9th
best French Business School

EDUNIVERSAL RANKING 2023 BEST MASTERS

6
programmes in the TOP 5

Faculty / Research

A doctoral school linked to our 8 Research Centres

- Marketing & New Consumption
- Food Wine & Hospitality
- Sustainability
- Supply Chain
- Creative Industries & Culture
- SEEFAR Finance reconsidered
- International Business
- Entrepreneurship & Family Business

Research key figures:

7
chairs

€2M budget

Shanghai Ranking 2022

2nd French School for Research in Business Administration

Our responsibility as a school

We are convinced that, contemporary Business Schools should be a place of exploration where students draw from the strength of the group to create their own path and define their impact on the world.

We must help them to:



**DISCOVER
AND DEVELOP
THEMSELVES**



**BE OPEN-MINDED
TOWARDS OTHERS
AND THE WORLD**



**ENGAGE IN ACTIONS
THAT HAVE A POSITIVE,
COLLECTIVE IMPACT**

KEDGE Impakt

As a higher education institution welcoming 15,000 students, we have a duty to train and equip future managers capable of building a desirable future. Committed to a CSR approach since 2007, our ambition for 2025 is to make KEDGE an original, sustainable and inclusive school. This promise is embodied in our KEDGE IMPAKT strategy. KEDGE IMPAKT is our contribution to the UN's Sustainable Development Goals (SDGs) and is divided into 3 pillars:

- **CARE FOR PEOPLE**
being committed to a more inclusive society
- **ACT FOR THE PLANET**
tackling biodiversity & climate crises
- **INNOVATE FOR TOMORROW**
reinventing our jobs to accelerate the ecological and social transition

KEDGE
IMPACT →



PRME Principles for Responsible
Management Education
an initiative of the United Nations Global Compact

Handicap

Through its commitment to inclusion, KEDGE has mobilised resources and a network of volunteers to support students with a disability. The school facilitates public access to information, as well as the integration, pedagogical monitoring and employability of its learners.





BORDEAUX

- KEDGE Bachelor
- Master in Management (MiM/PGE)
- EBP International
- Short terms:
 - International Summer Schools
 - Tailor-Made & Faculty- Led
- Executive MBA
- PhD Programme

- Masters of Science (MScs):
 - Banking & finance
 - Data analytics for business
 - International business
 - ISLI: Global supply chain management
 - MAI: International purchasing and innovation management
 - Marketing
 - Wine & spirits management



MARSEILLE

- KEDGE Bachelor
- International BBA
- Master in Management (MiM/PGE)
- Short terms
 - International Summer Schools
 - Tailor-Made & Faculty- Led
- Executive MBA
- PhD Programme

- Masters of Science (MScs):
 - Audit et pilotage de la performance
 - Corporate finance
 - Digital marketing & sales
 - Marketing
 - International business
 - International sport & event management
 - International trade & logistics



PARIS

- KEDGE Bachelor
- International BBA
- Short terms
 - International Summer/Winter Schools
 - Tailor-Made & Faculty- Led
- Executive MBA
- PhD Programme

- Masters of Science (MScs):
 - Arts & creative industries management
 - Business transformation for sustainability
 - International business
 - Marketing
 - Sustainable finance
 - Wine & hospitality management



TOULON

- KEDGE Bachelor

- Ingénieur d'affaires



SUZHOU



SHANGHAI



ABIQJAN



D☆KAR

Support

EARLY BIRDS & SCHOLARSHIPS

- Early birds: Tuition fee discount granted for every application completed within the Early Birds period.
- KEDGE Business School offers a wide range of grants to foreign students to help them finance their studies in France.
 - **Erasmus +:** the EU's programme to support education, training, youth, and sport in Europe. Every year, it offers international students the possibility to benefit from a mobility grant.
 - **KEDGE scholarships for international students:**
 - Excellence scholarship / Solidarity scholarship / Diversity scholarship / Partner scholarship / Alumni scholarship
 - More information on the scholarships page at student.kedge.edu

HOUSING ASSISTANCE

- The housing services for KEDGE students are available on kedge.studapart.com

HOUSING
SUPPORT
CONTACT

BORDEAUX CAMPUS logementbordeaux@kedgebs.com - Tel. +33 (0) 556 846 326

MARSEILLE & TOULON CAMPUS logementmarseille@kedgebs.com - Tel. +33 (0) 491 827 314

- You can also join **the Facebook groups:**

 [KEDGE immo Bordeaux](#) / [KEDGE immo Marseille](#) / [KEDGE immo Paris](#)

ESTIMATED EXPENSES

MONTHLY FEES	BORDEAUX	MARSEILLE	TOULON	PARIS
ACCOMMODATION (Depending on location, size and length of stay)	€380 TO €750	€380 TO €700	€350 TO €700	€650 TO €1,000
FOOD	€200	€200	€200	€275
PUBLIC TRANSPORT	€30 infotbm.com	€25 rtm.fr	€25 reseaumistral.fr	€ 73 TO € 84 iledefrance-mobilites.fr/en

ASSOCIATIONS DEDICATED TO INTERNATIONAL STUDENTS

- Bordeaux: **Melting Potes**
- Marseille: **Inter'Act**

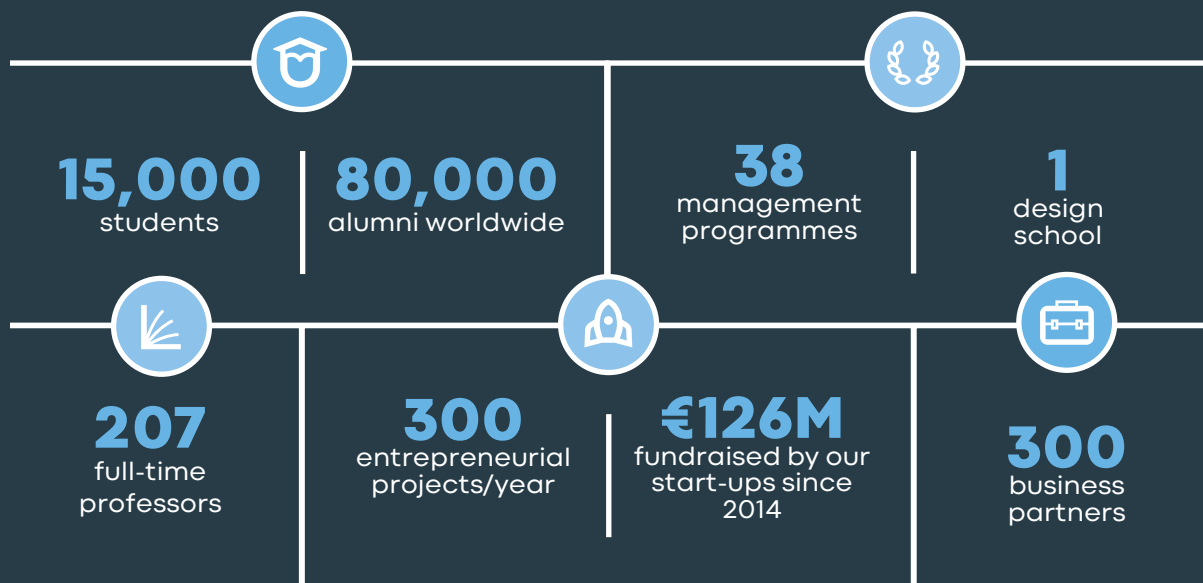
CAREER CENTRE

- to help students find work placements and plan a career path

ENTREPRENEURSHIP

- Business start-up assistance

Key figures



A global community

309 partner universities including:

22 in Africa / Middle East
54 in Asia
136 in Europe
51 in North America
38 in Latin America
8 in Oceania

3 international campuses
4 campuses in France

