



北京工商大学



Beijing Technology and Business University

Contents



- I About**
 - ABOUT BTBU
 - TOP 10 REASONS TO CHOOSE BTBU
 - BTBU AT GLANCE

- 7 Academic**
 - SCHOOLS
 - PROGRAMS
 - RESEARCH

- 25 International**
 - COOPERATION PROGRAMS
 - STUDENTS ADMISSION
 - SCHOLARSHIPS
 - LIFE IN BTBU

- 39 Campus**
 - CAMPUS TOUR
 - BEIJING CITY
 - BTBU CAMPUS

- 50 Contact**
 - CONTACT INFORMATION
 - BTBU SOCIAL NETWORK



Welcome



Welcome to Beijing Technology and Business University (BTBU), Beijing, China. BTBU is one of the earliest universities in the People's Republic of China. As a public university, we have a proud tradition of excellence in learning and teaching, research and social service.

BTBU ranks the top 5%-10% within best Chinese universities in such subjects as Food Science, Chemistry, Information Engineering, Accounting, Finance, Logistics and Supply Chain Management, Design and Communication, and Laws.

BTBU enjoys deep collaboration with and extensive services to business, industry, government and the community by our outstanding professors and researchers with high level researches and achievements. Students at BTBU learn not only the latest theories but also the adaptive methodologies applied widely by the professors and researchers.

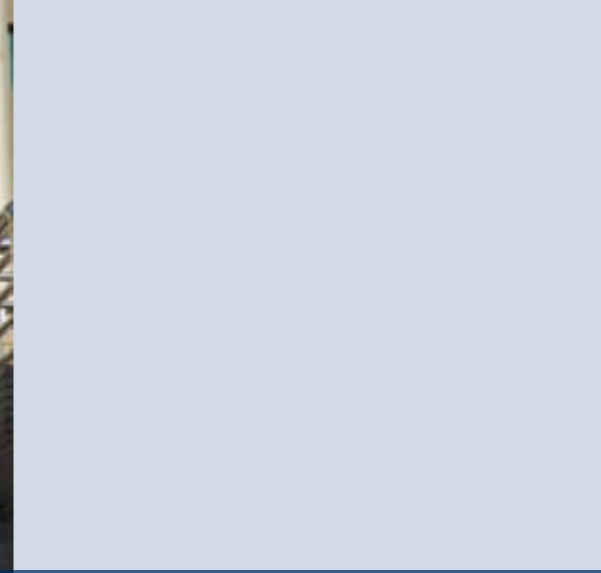
Many BTBU graduates have become leaders in government, business and industry in China. Our research benefits and influences the country and even the world socially, economically, artistically and culturally. Our graduates are high-quality and well equipped for the international workforce, and many of our alumni have become top scholars, inventors, entrepreneurs and leaders in authorities of different levels in China.

We are in the pursuit of an excellent member in the family of universities in the world with world-class disciplines.

I look forward to welcoming you to BTBU!

Sun Baoguo

Ph.D., Professor
President of BTBU
Academician of China Academy of Engineering



About BTBU

OUR MISSIONS

To Generate and Distribute Knowledge. We are strongly supporting and challenging not only our students but also lecturers. BTBU is characterized by a particularly close relationship to business, thus creating a learning environment with a personal development potential.

OUR HISTORY

Founded in 1950 as one of the first universities of P. R. China, Beijing Technology and Business University (BTBU) enjoys a longstanding reputation of excellence in China. Our legacy of providing globally relevant, practical education shapes our future as one of the world universities with world-class disciplines.

OUR EDUCATION

At BTBU, we take pride in the broad range and high quality of our teaching programs. Our teaching gains strength from our research activities and our international nature; BTBU also has a strong regional and global engagement.

OUR ACADEMIC ENVIRONMENT

In developing new ideas and promoting lasting knowledge, BTBU is creating an academic environment where outstanding students and scholars from around the world can be inspired to excel in their programs of study and research.

OUR OUTSTANDING ALUMNI

BTBU gains a widely recognized qualifications with Food Science and Technology program accredited by IFT and Business Administration program in the process of accreditation by AACSB which will give the students the professional edge and help the students achieve their career ambitions. Some of our graduates have gone on to become Academicians of China Academy of Engineering, which is the top academic institution in China; top scientists and scholars in different fields; ministers in different Ministries of government and CEOs in different businesses.

OUR GLOBAL OPPORTUNITIES

At BTBU, we'll put our students in touch with a world of possibilities through our international affiliations, industry and alumni mentoring programs, and innovative partnerships. We offer many joint cooperation programs in different levels and areas, as well as exchange opportunities through more than 61 partner agreements with overseas universities in 20 countries. BTBU's goal is to become a leading institution in global education in China. Hence, recently it has included 10 English Taught Programs in its portfolio.



Top 10 Reasons to Choose BTBU

- 1.** BTBU ranks the top 5%-10% within best Chinese universities in such subjects as Food Science, Chemistry, Information Engineering, Accounting, Finance, Logistics and Supply Chain Management, Design and Communication, and Laws.
- 2.** There are some top professors of China at BTBU with honors of Nation or Province-Level Teaching Elites, and some top teaching teams of China at BTBU with honors of Nation or Province-Level Teaching Groups, awarded by central or local educational authorities due to their outstanding academic contributions.
- 3.** There are some top academic programs of China at BTBU with honors of Nation or Province-Level Academic Programs, and Excellent Courses of China at BTBU with honors of Nation or Province-Level Elite Courses, awarded by central or local educational authorities due to the excellence of the programs.
- 4.** There are top researchers and top researches of China at BTBU in a number of professional fields, i.e. Food Engineering, Cosmetic Science and Technology, Accounting, Finance, Logistics and Supply Chain Management, Communication.
- 5.** BTBU offers different kind of scholarships covering national, municipal and university levels for international students.
- 6.** BTBU provides various cultural experience activities for international students.
- 7.** BTBU offers international students opportunities to attend activities provided by government and other association.
- 8.** As an international student, you are welcomed to join BTBU Volunteer Association of International Cooperation and Exchange (VAICE), which can offer you opportunities to cooperate with Chinese students, gain voluntary working experience and even make contribution to the university's internationalization.
- 9.** BTBU downtown campus is located in the central part of Beijing city with easy and convenient transportation to travel around.
- 10.** BTBU provides the well-equipped residential halls for international students.

BTBU at Glance

- ◆ Our strengths in education, research and service are **Business** and **Light Industry** (particularly food and its related industries).
- ◆ The Strategic Goal is **High-level Teaching** and **Research-intensive** University with World-class disciplines.
- ◆ Consistently ranked in top **5%-10%** within best Chinese universities in some disciplines.
- ◆ A fast-developing key public university run and supported by Beijing Municipal Government.
- ◆ Offer **2** Doctoral programs, **60** Master programs, **50** Bachelor programs covering Economics, Management, Engineering, Sciences, Arts, Law and History.
- ◆ A Global Network of Universities with **83** partners from **27** countries in the world.
- ◆ An international environment where **95%** of Chinese students and faculty members speak English.
- ◆ Totally **820,000** square meters in two campuses-Fucheng Road Campus (downtown campus) and Liangxiang Campus with easy and convenient transportation in Beijing City.



Students	13951
Undergraduates	11800
Master Candidates	2133
Ph.D. Candidates	18
International Students (full-time)	113
Faculty and Staff	1442
Professors	140
Associate Professors	357

(Figures in 2015)



Academic



We offer 50 undergraduate programs, 62 postgraduate programs as well as 2 doctoral programs. Among them, some programs are taught in English, you can find from the following pages of introduction to schools.

To satisfy the requirements of non-degree exchange students from our partner universities, we offer some very attractive selective courses in Chinese Economy and Trade. We also provide Specialized Chinese Language Courses dedicating to those students who are interested in learning Chinese language in different levels.

For more detailed information, please visit our website
<http://international.btbu.edu.cn/internationaloffice> or <http://www.btbu.edu.cn>

Schools

SCHOOL OF SCIENCE

Established in January 2011, programs offered by School of Science are Applied Statistics for Risk and Actuarial Studies. Graduates are expected to be skillful in three areas: risk and actuarial, mathematics and English, they will be familiar with the financial markets in home and abroad, they will be able to be engaged in data processing analysis, risk assessment, information management, etc. in financial, insurance, actuarial, securities and other institutions, or they can continue to pursue master's degrees.

Strength in research in the school is Cosmetic Science and Technology with specializations in Biological Technology of Cosmetic and Cosmetic Formulation process.



		Bachelor	Master	Professional Master	Doctoral	Teaching Language	
	Years	4	3	2	3		Other Qualifications
School of Science	Applied Statistics	•				CN	
	Biotechnology (Cosmetics)	•				CN	
	Chemistry (Cosmetics)	•				CN	
	Information and Computing Science	•				CN	
	Optoelectronic Information Science and Engineering	•				CN	
	Cosmetic Science and Technology		•			CN	
	Chemical Technology		•			CN	
	Materials Physics and Chemistry		•			CN	
	Statistics		•			CN	
Chemical Engineering				•		CN	
NOTES	1. one year=two semesters 2. CN stands for Chinese as teaching language while EN for English.						

SCHOOL OF FOOD AND CHEMICAL ENGINEERING

Established in 1950 along with the founding of People's Republic of China, School of Food and Chemical Engineering offers academic programs for bachelor, master and doctoral students in Applied Chemistry and Food Science and Engineering with its focuses on Flavors and Fragrance, Surfactants and Detergents, Food Additive and Ingredients.

The school is a main school of research outputs of BTBU, there are several famous research teams: Biomass Waste Recycling and Energy team, Typical City Environmental Problems team, and teams led by Prof. Sun Baoguo, President of BTBU and Academician of China Academy of Engineering, i.e. team of Flavors and Fragrances and team of Food Additive and Ingredients.

The research interests of the teams are in Technology of Thermal Reactions; the Analysis of Chinese Traditional Food; Synthesis of Flavor Compounds; Food Flavor, Food Color, Food Emulsifier, Food Sweetener and Functional Ingredients.



		Bachelor	Master	Specialization master	Doctoral	Teaching Language	
	Years	4	3	2	4		Other Qualifications
School of Food Science and Chemical Engineering	Applied Chemistry	●	●			CN	
	Biological Engineering	●				CN	
	Environmental Engineering	●				CN	
	Food Quality and Safety	●				CN	
	Food Science and Engineering	●	●		●	CN/EN	Only Master and Doctoral program have English-taught and scholarships.
	Chemical Engineering			●		CN	
	Food Engineering			●		CN	
	Biochemical Industry		●			CN	
	Environmental Science and Engineering		●			CN	
	NOTES	1. one year=two semesters 2. CN stands for Chinese as teaching language while EN for English.					

SCHOOL OF MATERIAL SCIENCE AND MECHANICAL ENGINEERING

Re-established in January 2011, the following institutional units are operated in School of Material Science and Mechanical Engineering: Material Science and Engineering, Mechanical Engineering, Industrial Engineering, Center for Engineering Practices, Institute of Plastic Processing and Application of Light Industry (IPPA) and etc.

There are several famous research teams in the school: Functional film, science and technology innovation team for bio-base green food packaging; Food Machinery Innovation Design Team and Advanced Manufacturing Technology Team.

The key discipline is Mechanical Engineering with specializations of Food Machinery Innovation Design, Food Machinery Innovation Design, Advanced Manufacture Technology and Advanced Manufacture Technology.



		Bachelor	Master	Specialization master	Doctoral	Teaching Language	
	Years	4	3	2	3		Other Qualifications
School of Material Science and Mechanical Engineering	Industrial Design	●				CN	
	Mechanical Engineering	●		●		CN	
	Packaging Engineering	●				CN	
	Polymer Materials and Engineering	●				CN	
	Mechanical Design and Theory		●			CN	
	Mechanical Manufacture and Automation		●			CN	
	Material Engineering			●		CN	
	Material Science and Engineering		●			CN	
	NOTES	1. one year=two semesters 2. CN stands for Chinese as teaching language while EN for English.					



SCHOOL OF COMPUTER AND INFORMATION ENGINEERING

School of Computer and Information Engineering offers both undergraduate and graduate programs which were started in 1980 and 1981 respectively.

There are four departments in the school: Department of Computer Science, Department of Automation, Department of Electronics and Information and Department of Information Management. There are a teaching and experiment center and several out-campus practice bases.

It offers four master degrees: Computer Science and Technology, Software Engineering, Control Science and Engineering, Management Science and Engineering.



		Bachelor	Master	Specialization master	Doctoral	Teaching Language		
	Years	4	3	2	3		Other Qualifications	
School of Computer and Information Engineering	Automation	•				CN		
	Computer Science and Technology	•				CN		
	Electronic Business	•				CN		
	Electronic Engineering and Automation	•				CN		
	Electronic Science and Technology	•				CN		
	Engineering of Internet of things		•			CN		
	Information Management and Information Systems		•			CN		
	Information Engineering		•			CN		
	Computer Application Technology		•			CN/EN		
	Control Theory and Control Engineering		•			CN/EN		
	Detection Technology and Automatic Equipment		•			CN		
	Management Science and Engineering		•			CN		
	Computer Technology				•		CN	
	Control Engineering				•		CN	
	Logistics Engineering				•		CN	
Software Engineering		•	•			CN		
NOTES	1. one year=two semesters 2. CN stands for Chinese as teaching language while EN for English.							

SCHOOL OF ECONOMICS

School of Economics has a well-equipped powerful faculty team with reasonable structure and strong competence in both teaching and scientific research.

School of Economics, with the longest history since 1950 along with the founding of People's Republic of China and as one of the biggest schools in Beijing Technology and Business University (BTBU), now offers as many as 8 majors for undergraduate programs, 10 majors for academic master programs and 6 professional master programs for postgraduates. School of Economics has 7 teaching and research teams in 5 departments: Department of Economics, Department of Trade, Department of Finance (Insurance), Department of Public Finance, and Department of Statistics.

Through the international cooperation of “3+1”, “3+2” and “2+2” programs with more than 20 international partner universities around the world, students are in a position to pursue their bachelor or master degrees home and abroad.



		Bachelor	Master	Specialization master	Doctoral	Teaching Language	
	Years	4	3	2	3		Other Qualifications
School of Economics	Cameralistics	•	•			CN	
	Economics	•				CN	
	Economic Statistics	•				CN	
	Finance	•	•	•		CN/EN	
	Financial Engineering	•				CN	
	International Economics and Trade	•				CN/EN	
	Trade Economy	•				CN	
	Industrial Economics		•			CN	
	International Trade		•			CN	
	Quantitative Economics		•			CN	
	Statistics		•			CN	
	Western Economics		•			CN	
	Applied Statistics				•	CN	
	Taxation				•	CN	
	Assets Assessment				•	CN	
Master of International Business			•	•	EN		
Insurance	•	•	•		CN		
NOTES	1. one year=two semesters 2. CN stands for Chinese as teaching language while EN for English.						

SCHOOL OF BUSINESS

Started in 1950 along with the founding of the People's Republic of China, Business School is the biggest school in BTBU in terms of student number, it offers bachelor and master programs in Accounting, Logistics Management, Financial Management, Business Administration, Marketing, Human Resources Management, Tourism Management, Management and Engineering and Public Management. It offers doctoral programs in Accounting jointly with Central University of Finance and Economics of China.

It's one of the earliest school offering CPA programs in China which was in 1995. Fully English-taught bachelor program of CPA was inaugurated in 2002.

Accounting Management and Logistics Management are two Nation-level bachelor programs evaluated by the Ministry of Education of China.

There are municipal-level research centres for Accounting-based Investor Protection, Service Management and Retail Management.



		Bachelor	Master	Specialization master	Doctoral	Teaching Language	
	Years	4	3	2	3		Other Qualifications
School of Business	Accounting	•	•	•		CN/EN	
	Business Administration	•	•			CN	
	Financial Management	•	•			CN	
	Human Resource Management	•				CN	
	Logistics Management	•				CN/EN	
	Marketing	•				CN	
	Management Science	•				CN	
	Public Service Administration	•				CN	
	Tourism Management	•	•			CN	
	Management Science and Management Science and Engineering		•			CN	
	Technical Economics and Management		•			CN	
	Master of Business Administration (MBA)*				•	CN/EN	
	NOTES	1. one year=two semesters 2. CN stands for Chinese as teaching language while EN for English.					

SCHOOL OF LAW/MARXISM

School of Law/Marxism has the full responsibility of teaching public courses of Marxist Theory, and some other optional courses for all of the programs in other schools of the university.

It offers Law, Civil and Commercial Law, Economic Law, Litigation Law, Study in Sinicized Marxist and Ideological and Political Education program which are taught in Chinese.



		Bachelor	Master	Specialization master	Doctoral	Teaching Language	
	Years	4	3	2	3		Other Qualifications
School of Law/Marxism	Law	•		•		CN	
	Civil and Commercial Law		•			CN	
	Economic Law		•			CN	
	Litigation Law		•			CN	
	Study in Sinicizing Marxist		•			CN	
	Ideological and Political Education		•			CN	
NOTES	1. one year=two semesters 2. CN stands for Chinese as teaching language while EN for English.						

SCHOOL OF FOREIGN LANGUAGES

School of Foreign Languages consists of Business English Department (mainly with English majors), College English Department I, College English Department II (with teachers of English, Japanese, Russian and French undertaking the work of teaching non-English majors and postgraduates) and language lab.

In recent years, the School has undertaken quite a few high-level research projects, including the state-level ones.

It offers English (Business English), Translation, International Legal and Business English programs for both undergraduate and graduate students.



		Bachelor	Master	Specialization master	Doctoral	Teaching Language	
	Years	4	3	2	3		Other Qualifications
School of Foreign Language	English (Business English)	•				CN/EN	
	Translation			•		CN/EN	
	International Legal and Business English		•			CN/EN	
	NOTES	1. one year=two semesters 2. CN stands for Chinese as teaching language while EN for English.					



SCHOOL OF ART AND COMMUNICATION

School of Art and Communication offers Advertising, Digital Media Art, Journalism, Product Design, Visual Communication Design, Journalism and Communication, and Communication Journalism and Communication programs for both undergraduate and graduate students.

The strength of the school in teaching and research is Journalism and Communication with specialization in Brand Communication and Economic Information Dissemination.



		Bachelor	Master	Specialization master	Doctoral	Teaching Language	
	Years	4	3	2	3		Other Qualifications
School of Art and Communication	Advertising	•				CN	
	Digital Media Art	•				CN	
	Journalism	•				CN	
	Product Design	•				CN	
	Visual Communication Design	•				CN	
	Journalism and Communication					CN	
	Communication Journalism and Communication		•	•		CN	
NOTES	1. one year=two semesters 2. CN stands for Chinese as teaching language while EN for English.						

Programs

BTBU's International Exchange-Students Programs

In cooperation with leading partner institutions around the world, we offer international programs at both undergraduate and postgraduate levels. These international programs support a wide range of different opportunities for both staff and students to study or undertake research at BTBU.

SPECIALIZED CHINESE LANGUAGE COURSES FOR OVERSEAS STUDENTS

BTBU offers Chinese language courses for interested groups of international students. These courses can be as long as two years and as short as one semester depending on the requirements of our international students.

The year-based course can lead to a pass of Official Chinese Language Examination- HSK 4. At the same time, the language courses are designed to enrich cultural

experience of overseas students with a number of activities outside the classroom, which give students a taste of Beijing local and Chinese cultures.

PROGRAMS AND COURSES FOR EXCHANGE STUDENTS

BTBU provides cost-effective opportunities for students to obtain excellent international experience at partner universities.

The study-in-China experience is rewarding to the academic and personal growth of foreign students who will gain valuable qualities such

as communication skills, innovation, leadership and different cultures.

BTBU opens all programs and courses for our overseas students and prepares a number of programs and courses dedicated to the overseas students. All English-taught programs and courses can be applicable by foreign students, of course if their Chinese are good enough, they can register all Chinese-taught programs and courses.

Thanks to the global collaborative network, BTBU's worldwide partner universities offer multiple educational opportunities with the highest quality in the world.



SELECTIVE COURSES IN CHINESE ECONOMY AND TRADE FOR OVERSEAS STUDENTS

BTBU offers a range of tailored courses dedicated to exchange students from our partner universities. All of the courses are focusing on Chinese economy and trade, students will have opportunities to learn, by attending courses delivered by our specialized experts in related areas with good English, the best practices in Chinese industries, the industrial structure of Chinese economy, Chinese manufacturing and market, Chinese financial system, Chinese infrastructure, the China-model of economic growth, the development of world-class Chinese companies, the development of Chinese economy since the opening to the outside world in 1978, and more. Field visits to local businesses and joint case studies with Chinese students will be arranged by instructors.

These courses also provide a platform for students who are interested in China to explore China, to seek for further study in China, to increase cross-culture understanding and to enhance language skills.



For more details on the above programs and courses, please visit <http://international.btbu.edu.cn/internationaloffice/>

		Bachelor	Master	Doctoral	Non-degree	Teaching Language	
	Years	4	3	3	0.5-1		Other Qualifications
International Exchange student program	Chinese Economy and Trade				•	EN	
	Specialized Chinese Language Courses				•	EN	
	Exchange Students Programs				•	EN	
NOTES	1. one year=two semesters 2. CN stands for Chinese as teaching language while EN for English.						



BTBU Key Research Groups

Research

BTBU is a member of several important networks in variety of academic and industrial institutes at the regional, national level. One of the University's fundamental tasks is to cooperate with the local community. It acts as a powerful think tank for central and local governments in our professional areas, and provides consultancy services to companies and transfers patented intellectual properties to businesses

Several national and regional research centers and facilities are located in BTBU including:

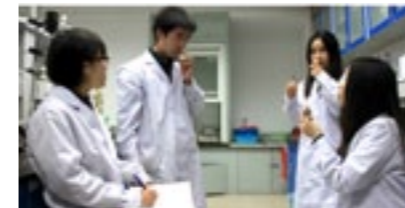
- Beijing Research Center for Food Safety Analysis
- Beijing Engineering Technology Research Center for Food Additives
- BTBU Research Center for Food Safety
- Beijing Laboratory for Food Quality and Safety
- Collaborative Innovation Center for Investor and state-owned assets

management

- Research Center for Distribution in Capital Area
- China Cosmetic Research Center

Research is one of the key responsibilities of BTBU faculty. The University has been commissioned by the government to develop several strategic research topics over a number of years including:

- Food quality and safety
- Food Policy
- Cosmetics
- Climate environment and Energy saving
- International Economics and Trade
- Regional Economic Integration
- The construction of Small Town
- Logistics and Supply Chain Management
- City Freight Distribution
- Electronic Commerce
- State-owned assets management
- Intelligent City



BEIJING ADVANCED INNOVATION CENTER

Established in 2015 by Beijing Municipal Government as part of the Strategy of Innovation-Driven Development of the city, Beijing Advanced Innovation Center for Food Nutrition and Human Health Center is jointly operated by China Agricultural University (CAU) and Beijing Technology and Business University (BTBU). The Center will strive for original research excellence and leadership on food, nutrition and human health, and will be operated according to international research standards under the governance of a highly elected International Academic Committee.

To fulfill its mission, the Center is enthusiastically inviting highly motivated and talented scientists of all ranks and all nationalities who conduct cutting-edge research in related areas to apply for over 100 open positions.

The Center is anchored for two areas of research excellence and world leadership: food nutrition and food safety for improving human health. A central mission is to build world-class platforms for both fundamental and transnational research on healthy food development and processing.

The Center consists of three research platforms: Food Nutrition and Human Health, Food Safety, and Food Processing Technology. Each platform highlights multiple research areas. Thirty senior PIs will be recruited to lead 30 new Laboratories or Research teams that include junior PIs, Research Associates, and Postdoctoral Associates.

International

BTBU offers support and services for international students. We are here to help and support you during your time at BTBU.

Programs

Internationalization is a process that enriches our activities with new perspectives and opportunities for collaboration. In order to achieve this, we are striving for development and progress in these areas:

- Internationalization of University Governance.
- International Education Programs providing both overseas students and our outgoing students with the opportunities to develop global awareness.
- Joint Scientific Research Programs with overseas partners.
- International Learning Environment and Exchange Platform.

With the great support of and close collaboration with its international partners, BTBU encourages students to study abroad and provides a range of opportunities for them to choose for further study. Study-abroad programs offered at BTBU together with international partners include dual degree programs, joint bachelor and master degree programs, long-term (one semester or longer) exchange programs, short-term (less than one semester) exchange programs and summer school programs, foreign internships, international conference attendance, international competitions, international research, etc.

Global partner universities of BTBU are distributed in the United States, U.K., France, Finland, the Netherlands, Sweden, Ireland, Canada, Brazil, Australia, New Zealand, Switzerland, South Korea, Singapore, Hungary, Greece, Turkey, Russia, Belorussia, Latvia, India, Thailand, etc.

For more information you can go to: <http://www.btbu.edu.cn/gjil/gjhzjl/79995.htm>

International Programs offered by BTBU includes:

- 4+0+x BTBU and UCC (University College Cork of Ireland) Dual Degree Programs approved by Ministry of Education of China (Applied Statistics-Risk and Actuarial Studies, Food Science and Engineering)
- 2+2 Dual Degree program between BTBU and partner universities
- 3+1+x Joint Bachelor and Master Degree Program
- 3.5+0.5+x Joint Bachelor and Master Degree Program
- Joint-Ph.D Program
- Long-term (one semester or longer) exchange programs
- Short-term (less than one semester) exchange programs
- Summer school programs
- Foreign internships
- International conference
- International competitions
- International research



Admission

We deliver 'The Best Student Experience', an exemplary learning experience that engages the best and brightest people challenging them to meet ever-higher standards in the classroom and beyond.

We encourage qualified international students to pursue their studies at BTBU and support the development of every dimension of a student - intellectual, social, cultural as well as physical. From our home in Beijing, China, outward across every continent, BTBU prepares future leaders to succeed.

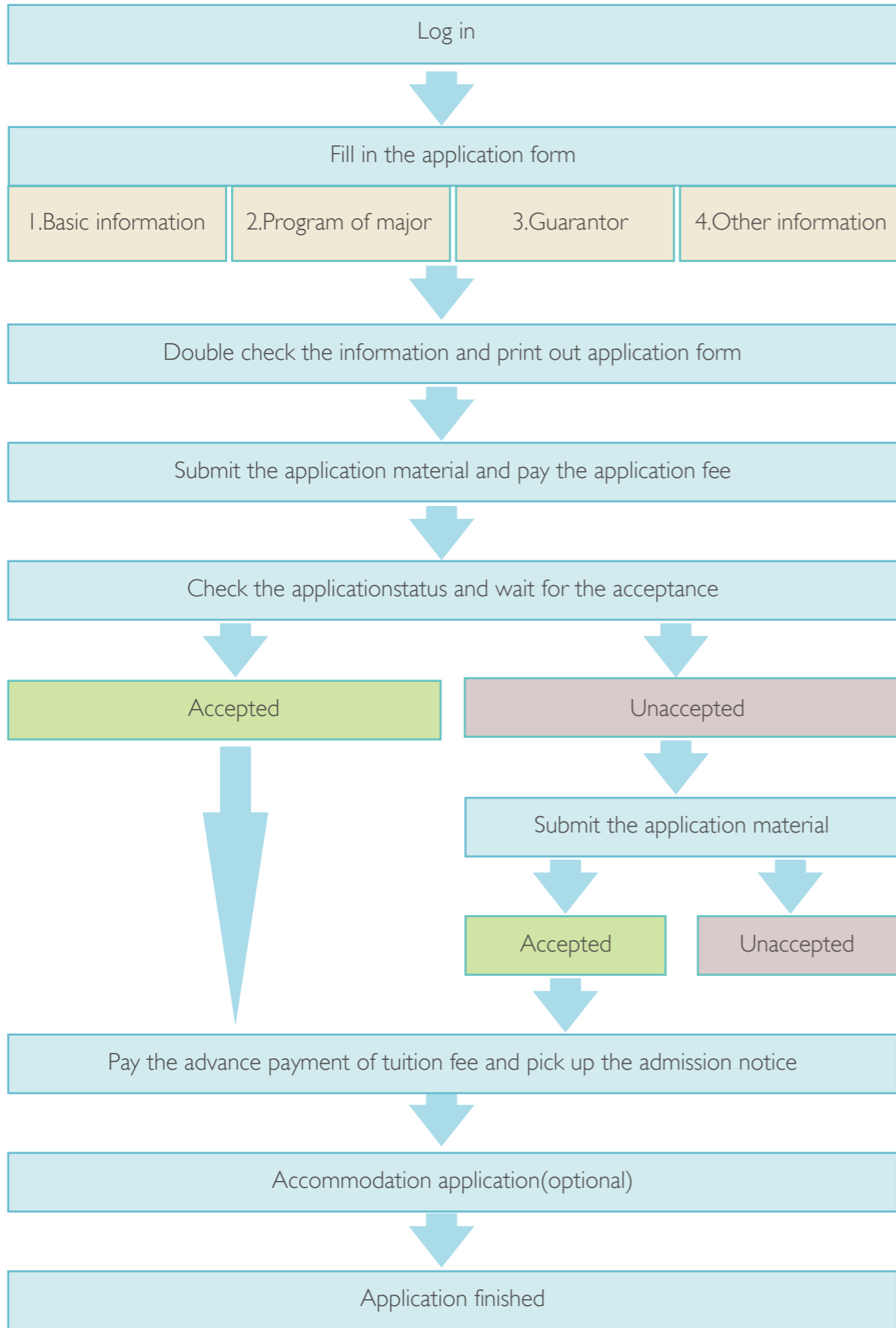
HOW TO APPLY

Applicants should follow the procedure (see page 27) to apply. Our staff will take good care of your applications and give you feedback in time. Remember to apply early and well in advance of the application deadline!

Please register from the web page <http://admission.btbu.edu.cn> and complete all Application Forms of BTBU (printed out from online application system), filled in Chinese or in English.



Your application process will differ depending on your previous or current educational background and whether you would like to study on a full- or part-time or different degree basis.



APPLICATION MATERIALS

Each applicant should prepare the following materials and Apply Online. Applicants who fail to submit the full package in time will not be taken into further recruitment processes.

1. Application Form of Beijing Technology and Business University.
2. A copy of the applicants' highest diploma and academic record.
3. A photocopy of the front page of a valid passport.
4. The Foreigner Physical Examination Form from <http://english.btbu.edu.cn>.
5. Original Chinese language proficient certificate or a copy of that with HSK 5 or new HSK 4 with score 210 or above, if apply Chinese degree program.
6. The TOEFL iBT score of 70 points at least, or IELTS score at least 5.5 or the relevant certificates of English, if non-native English speakers apply the English program.
7. The photocopy of application fee remitting receipt.
8. Submit all of the application materials on line: <http://admission.btbu.edu.cn>.

After finish the online application, please print out the application form, sign your name and POST it to International office, BTBU with the other application materials.



Scholarships

BTBU is pleased to welcome international students to its community and we wish to recognize the academic achievements of international students through our scholarship programs.

CHINESE GOVERNMENT SCHOLARSHIP by CHINA SCHOLARSHIP COUNCIL (CSC)

What does the scholarship cover?

- Application fee, tuition, accommodation, Comprehensive Medical Insurance Stipend;
- Bachelor's students: CNY 2,500 per month;
- Master's students / general scholars: CNY 3,000 per month;
- Doctoral students / senior scholars: CNY 3,500 per month.

Who can apply?

1. Non-Chinese citizens and in good health;
2. Not registered students in Chinese universities at the time of application;
3. Not applying for language programs;
4. Graduated from Chinese universities for more than one year;
5. Applicants for Master programs should be under the age of 35 and hold a bachelor's degree;
6. Applicants for PhD programs should be under the age of 40 and hold a master's degree.

CSC-BILATERAL PROGRAM

CSC-Bilateral Program, for exchange students from BTBU International Partners, they can have such opportunities to apply the Bilateral Program. You can inquire our teachers when you apply to study at BTBU.



How to apply?

Step 1

Register on <http://laihua.csc.edu.cn>, fill out all required information and submit online.

Step 2

Prepare all required application materials together with your CSC application form and send the scanned copy to international_office@btbu.edu.cn, title named "nationality + application number + Full name".

Step 3

Send the hard copies (in duplicate) of the above materials to the International office of BTBU after receiving the e-mail notice from the Admission Officers.

LIST OF REQUIRED DOCUMENTS

1. CSC application form;
2. Curriculum vitae (one page);
3. Statement of Proposal clearly indicating duration and purpose of study, preferred technical work or experience and academic background;
4. Two letters of recommendation by university professors;
5. Bachelor degree diploma for Master degree applicants and Master degree diploma for PhD degree applicants (Those who haven't finished their present studies, please provide certificate of schooling);
6. Transcripts of the highest degree for Master and PhD degree applicants, or transcripts at home country for exchange students (English version with signature and/or seal by the student's home university);
7. Passport copy and two-inch passport photo;
8. Applicants for music are requested to submit one CD recording of the applicants' own work. Applicants for fine arts must submit one CD recording of the applicants' own work (including two sketches, two color paintings and two other works);
9. Photocopy of Foreigner Physical Examination Form (printed by Chinese quarantine authority and only for those whose period of studies in China lasts up to six months) filled in English. (Download at <http://www.csc.edu.cn/laihua> or <http://www.campuschina.org/>)

*The medical examinations must cover all the items listed in the Foreigner Physical Examination Form. Incomplete records or those without the signature of the attending physician, the official stamp of the hospital or a sealed photograph of the applicants are invalid. The medical examination results are valid for 6 months. All applicants are kindly requested to take this factor into consideration while determining the time to take the medical examination (best on March).

FOR MORE INFORMATION

CHINESE GOVERNMENT SCHOLARSHIP by The China Scholarship Council (CSC)

<http://www.csc.edu.cn/laihua/scholarshipdetailen.aspx?cid=97&id=2070>

Chinese Government Scholarship-Chinese University Program

<http://www.csc.edu.cn/laihua/scholarshipdetailen.aspx?cid=97&id=3056>

Chinese Government Scholarships Application Online

<http://www.csc.edu.cn/laihua/noticteen.html>



BEIJING GOVERNMENT SCHOLARSHIP (BGS)

Beijing Government Scholarship (BGS) is awarded to international students who are admitted by universities in Beijing and who have demonstrated exceptional talent in academics.

What does the scholarship cover?

- Tuition (Full scholarship, half scholarship, 1/4 scholarship)

Who can apply?

- Non-Chinese Citizens in good health;
- Age between 18-30;
- Qualified previous academic records.

Below you can find the list of courses that taught in English and supported by Beijing Government Scholarship.

School	Degree	Program	Teaching language
School of Food Science and Chemical Engineering	Doctoral degree	Food Science and Engineering	English
	Master's degree	Food Science and Engineering	
School of Computer and Information Engineering	Master's degree	Computer Application Technology	English
		Control Theory and Control Engineering	
School of Economics	Bachelor's degree	Finance International economics and trade	English
	Master's degree	International business	
School of Business	Bachelor's degree	Accounting	English
		Logistics Management	
	Master's degree	Master of Business Administration (MBA)	English

To apply for the Beijing Government Scholarship, please download <Beijing Government Scholarship Application Form> from <http://admission.btbu.edu.cn> while applying BTBU.

For more information <http://international.btbu.edu.cn/internationaloffice/admission/scholarship/index.htm>

BTBU PRESIDENT SCHOLARSHIP

In order to encourage international students to pursue their studies at BTBU, BTBU President Scholarships will be awarded to qualified applicants for bachelor, master or doctoral degree, if they are not qualified for above-mentioned scholarships or the above-mentioned scholarships are not enough to support their studies. Evaluation of applicants will be conducted by BTBU international office and related schools based on the applicants' performance.

This scholarship will cover applicant's tuition fee.





Life in BTBU

In choosing BTBU, students will become part of a vibrant learning community at one of China's top teaching and research-intensive universities. Along with a wide variety of intellectually challenging and engaging academic programs, the University is also alive with a diverse array of opportunities for student involvement, personal growth, leadership development, and numerous co-curricular and extracurricular activities.

Quick view

- Reception and orientation service to assist and support newly arrived international students with questions about settling in.
- Peer Guide Program, providing friendly support and assistance with cultural and transition issues.
- Year-round social, cultural and informative events.
- Individual assistance with China government and employment regulations, financial, cultural, social and personal concerns.
- Chinese Conversation Program for students (and spouses) who want to enhance spoken Chinese skills.
- Volunteer opportunities to gain valuable experience in a cross-cultural setting.



International students activities

Experience Chinese Culture and Establish a Firm Connection with Local People

International students will never get bored living at BTBU. The University organizes a lot of outdoor activities every semester, such as visits to the Great Wall, the Forbidden City, the Capital Museum and some famous enterprises, and Football matches, Entertaining Sports Meeting, etc. Besides, BTBU provides series Chinese Culture Experience Classes including Chinese Ink Painting Class, Kongfu Class, and Chinese Medicine Class etc. Moreover, BTBU offers opportunities for international students to join activities provided by Beijing Municipal Commission of Education, Beijing NGO Association for International Exchange, and other international-related organizations, such as Chinese Cooking Course, Chinese Tea Art Courses, Chinese Opera Shows and so on.

Orientation and advising sessions help international students to adapt to life in the University. Additionally, BTBU Volunteer Association of International Cooperation and Exchange (VAICE) provides assistance for international students. The Association's Buddy Program allows every international student to have a mentor to learn from and resort to, and you are also welcomed to join VAICE as volunteers. In VAICE, You will have opportunities to make contribution to the university's internationalization, cooperate closely with local Chinese students, and gain special voluntary working experience at BTBU.







Share us “BTBU STORY”

Estermann Tebea (an exchange student from Haute Ecole de Gestion de Genève, Switzerland, 2015-2016)

Studying in BTBU is a great experience for me because it offers insights to the country, the system and the culture. Even though it is very different to my own country I highly appreciate the time I spend here and the people I get to know because it can change my understanding of the world. So I will tell you, if BTBU is a good choice for you.

Of course there will always be things you don't understand about China and that seem strange to you, but this is the same for foreigners in every country. Just think about your own country and the things foreigners find strange. The good thing about China is that the people are super-friendly and very helpful. The Chinese students are more than happy to help you in your daily life. You can ask them anytime to come to the bank, the post office or the administration. I went to several countries and nowhere the locals were as helpful as here. When it comes to the teaching there are some excellent and some rather medium professor, but again: this is probably the same in all Universities around the world. Luckily BTBU offers you several courses and a very flexible system to choose from it. I myself tried all the courses in the first week and thereafter chose the best ones. So it is all up to you: you can choose some very simple courses or more challenging ones, just as your interests are. And last and maybe most important: Beijing is a huge multinational, dynamic and exciting city. There are plenty of things to discover, events to join, pubs, bars and clubs to experience and so much more.



Muhammad Shahzad (an MBA student from Pakistan, 2015-2017)

I am Muhammad Shahzad from Pakistan. I am an international student of MBA at Beijing Technology and Business University. Like other people, I selected Beijing city for Education because it is an International city. I am pleased to share my experiences at BTBU because it is the place which gave me the opportunity to gain and multiply knowledge and share ideas with others. BTBU is a great venue for studying in terms of its location, education system and the support of its teachers and cooperation of international office.

I remember the time when I entered the class for the first time feeling like I was entering a new world having the first experience to be an international student. Here I didn't know anybody because I was in an international student's class where all students were from different countries and cultures so this was the first challenge to be faced. My confusion, anxiety and consciousness decreased after the start of first class and after interaction with other international students as we all were facing the same challenge of adjustment in new environment. All the teachers are very cooperative, kind, very helpful as well as talented and their managerial skills helped us to adjust in this new world.

The learning of Chinese language was the second challenge, which I faced. I must say, my success is only possible with the cooperation and help of great teachers of BTBU. They designed the language courses for international students in such a way so that students can learn and speak maximum with minimum time in an effective way by welcoming student's questions during as well as after classes. During class, different activities developed our interest in language and helped us to understand its uniqueness. The academic atmosphere is very friendly and democratic. All the courses are thought provoking and very nourishing.

The BTBU provides different mental as well as physical activities, which help to make students feel fresh during the busy and tiring schedule of learning. BTBU provides international students VIP treatment. Along with this, university also organizes some events and trips to some famous places of Beijing, which help international students to understand culture of China.

Wish you best of Luck, enjoy success of your wonderful life in BTBU.

Campus

When you arrive at Beijing Technology and Business University, the first thing you will notice is the spectacular view of the entire Beijing city. The campus view reflects our mission to expand your view of the future, to stretch your intellect and equip you for career and personal success. This is what we want to happen to you on our campus...

Campus tour

CAMPUS ENVIRONMENT

There are two campuses at BTBU: Fucheng Road Campus and Liangxiang Campus with a total area of 820,000 square meters.

Fucheng Road Campus is a downtown campus which is located at the middle of the West Third Ring Road, where accessions from four directions by public transport (airport bus stop, subway stations, bus hub and stops are within walks distance) are very convenient and easy. Most international students will stay and study at this campus.

Liangxiang Campus, a 12-year old campus, 40 km Southwest of Fucheng Road Campus, is 3 times larger than Fucheng Road Campus with a beautiful environment. Shuttle buses and direct subways connect both campuses. Undergraduate students stay and study there. Because it's a brand-new campus with modern facility and convenient public transport as well, students are enjoying their lives there.



SERVICE FOR INTERNATIONAL STUDENTS

International Office of BTBU is a dedicated department to International student service. We offer a full range of services and programs specifically tailored to meet the needs of international students and to enhance their academic, social, and cultural experience at the university.

Library

BTBU Library is one of the most important and widely used facilities on campuses. Central to the student experience at BTBU, and important to the wider community, it aims to provide exceptional services and resources. International students can visit the library at Fucheng Road Campus, also the library at Liangxiang Campus, to be admitted with their student cards.

The University Library also organizes various and interesting activities for all the students, aiming to stimulate their potential abilities in study and research. We strongly expect all the foreign students come and join us, communicating all the things in culture and study.

BTBU library has 15 reading rooms, 2391 reading seats and 138 computers available for readers to use. Wireless network covers the whole regions of library. As of June 2015, nearly 1.84 million volumes in hardcopies and 95.88 million volumes in softcopies had been collected by BTBU library which includes 1273 periodicals and newspapers in foreign language. The opening hour is up to 109 hours a week.

For more information: <http://btbu.cn.libguides.com/foreignstudents>





Accommodation

International students' dormitory

At Fucheng Road campus, there are two well-equipped residential halls, the International House and the Guest House, with about 300 beds for BTBU international students.

Room Amenities

- Single/double/three/four beds in one room with shower, 24 hours hot water
- Individual air conditioner
- Water boiling Kettle
- Study Lamp
- Heating system in the bathrooms
- LCD TV
- Chairs
- Nightstand
- Bookcase / slippers
- Patch board
- Wardrobe



Accommodation Amenities

- 3 conference rooms suitable for project works or just student gatherings;
- Spacious Kitchens on each floor, equipped with Refrigerators, kettles, Electric Cooking Stoves and Microwave;
- Laundry room, equipped with sinks for hand wash, washing machines and dryers. For those who prefer to dry their clothes they can use the hangers;
- 24*7 Reception Desk Service;
- Housekeeping Service that is taking care of the cleanness at public areas as well as for each student's room sheet change;
- Elevator;
- Internet Service;
- Security Camera Surveillance, Fire Fighting Device so that our students feel protected and intruders may be easily found.



* Students may apply for accommodation as soon as they receive conditional acceptance letters. Regarding the price of the room and service, please refer to payments and monetary terms chapter in the following page.





Canteen

There are several canteens on both campuses, including one Muslim canteen on each campus, providing students with various kinds of Chinese food and dishes with different local flavors.

Career Services

Career services office helps students start their career planning during their studies. Students learn about their own aptitudes, as well as different sectors and expectations of employers. Career Service Office also offers internship opportunities, on-campus work programs and alumni activities.



Beijing City and BTBU Campuses

Explore Beijing from BTBU and see how extraordinary student life can be.

BTBU + Beijing = your bright new future!

About Beijing

Beijing, also known as Peking, is the capital of the People's Republic of China and one of the most populous cities in the world, with a population of 21 million as of 2015. Beijing boasts of a history of more than 800 years as a capital city for 8 ancient imperial dynasties in the history of China and more than 3000 years as a city.

The city is the country's centres for politics, international exchange, culture and education, and home of headquarters or regional headquarters for a lot of international organizations, multinational companies and most of China's largest state-owned companies.

The metropolis, located in northern China, borders Hebei Province to the north, west, south, and a small section to the east, and Tianjin Municipality to the southeast.

Beijing has been voted as the most popular city for international university students, outperforming every other cities in the world. BTBU Fucheng Road campus locates in downtown Beijing. Both Fucheng Road and Liangxiang Campuses are within easy reach of famous and fashion places, as well as the buzzing city center. Whether you want to explore vibrant Beijing or stay close to the campus, there is always something exciting happening.





Few cities in the world have served as long as the political and cultural center of an area as immense. Beijing is one of the Four Great Ancient Capitals of China. It has been the heart of China's history for centuries, and there is scarcely a major building of any age in Beijing that does not have at least some national historical significance. The city is renowned for its opulent palaces, temples, and huge stonewalls and gates. Its art treasures and universities have long made it a center of culture and art in China.



How to Get to BTBU?

At BTBU we're focusing on making your commute to campus easy, safe and environmentally friendly.

Here you will find information about the free BTBU shuttle buses between two campuses, the air shuttle bus from Beijing Capital International Airport, paid bus services and the subway system which boasts of the longest miles in operation in the world. It's easier than you think to travel sustainably to campus!

If you travel for the first time from Terminal 1/2/3 (there are free shuttle buses connecting the three terminals) of Beijing Capital International Airport to BTBU which is about 35 km away, you will find some easy transportation options, including the airbus, subway and taxi service as explained below.



- By airbus. You can take Gong Zhu Fen Line from Beijing Capital International Airport, to the Hang Tian Bridge station.



- By subway. You can take airport line on Terminal 3 station, to Dong Zhi Men switch No.2 Line to Che Gong Zhuang, and switch to No.6 Line, to Hua Yuan Qiao Station, exit D2.



- By Taxi. At 5:00 am-22:59 pm, the fare is about RMB 110 from T3 of Beijing Capital International Airport to BTBU Fucheng Road Campus; at the rest of time, the fare is about RMB 130. Remember to claim for receipt from the driver when get off.



SURROUNDING THE BTBU

Fucheng Road Campus is close to Beijing West Railway Station, Purple-bamboo Park, the Capital Stadium, the National Library, the Capital Museum, and the National Grand Theatre.

There are 4 subway stations which can access to Fucheng Road Campus:

- In the south of the campus, get off from Gongzhufen Station of Line 2, walk about 15 minutes northward or take bus for one or two stops to the north direction and you will find BTBU;
- In the north of the campus, get off from Huayuanqiao Station of Line 6, walk about 15 minutes southward or take bus for one stop to the south direction of the campus, you will find BTBU;
- In the east of the campus, get off from Baiduizi Station of Line 9, walk about 15 minutes westward or take bus for one or two stops to the west direction, you will find BTBU;
- In the west of the campus, get off from Xidiaoyutai Station of Line 10, walk about 15 minutes eastward or take bus for one or two stops to the east direction of the campus and you will find BTBU.

Within walk distance, there are McDonald, KFC, coffee shops, Chinese restaurants, Russian restaurant, gyms, cinemas, supermarkets, Shopping Malls around the campus. There are all major banks with international businesses and hospitals with 5 minutes walk from the campus. It's really a very convenient location.

Virtual campus Online

<http://www.btbu.edu.cn/xysh/xxdy/index.htm>





Contact

Contact information

International Office, Beijing Technology and Business University
Address: No. 33, Fucheng Rd, Haidian District, Beijing, China, 100048
Contact: Ms. LIU Haitian (Tina)
Tel: +86 10 68984853
E-mail: international_office@btbu.edu.cn
Fax: + 86 10 68987834
Website: <http://international.btbu.edu.cn/internationaloffice>
<http://www.btbu.edu.cn>
Online Application: <http://admission.btbu.edu.cn>

BTBU social network



Sina Weibo



Wechat

Designed and Produced by
Ms. XIAO Jie, Lecturer, Graphic
Designer, School of Art and
Communication, BTBU



No. 33 Fucheng Rd., 100048

Beijing, P. R. China

Tel: +86 10 68984669

E-mail: wb@pub.btbu.edu.cn

www.btbu.edu.cn